



PORTFOLIO

Annette Foster McDaniel



LETTERHEAD PACKAGE DESIGN



FINANCIAL ADVISORY
INSTITUTE

Baldwin Park | 4767 New Broad Street, Suite #325 | Orlando, Florida 32814



Kathleen J. Almulla
Managing Principal

Chartered Retirement Planning Counselor

Baldwin Park | 4767 New Broad St. Suite #325, Orlando, Florida 32814 | 407.514.2656 | Fax: 407.641.9075
www.FinancialAdvisoryInstitute.com | info@FinancialAdvisoryInstitute.com

Financial Advisory Institute, an independent company with securities offered through Summit Brokerage Services, Inc. Member FINRA & SIPC.
and advisory services offered through Summit Financial Group Inc., a Registered Investment Advisor.

FRONT



Danville Bed and Breakfast

FOLDED BUSINESS CARD

INSIDE

*... wedding,
reception and honeymoon.
The key to Danville.*



www.danvillebnb.com



Dan and Deborah Shaw
Proprietors
407.349.5724

232 North Jungle Road
Geneva, FL 32732
stay@danvillebnb.com

BACK



Danville Bed and Breakfast

Health Care Reform Volusia County Town Hall

We are currently seeking vendors to participate in our health care town hall.

More than two-thirds of Americans (69%) closely followed news accounts of town hall meetings on health care reform (2009 Gallup Poll).

With all of the coverage about health care, many Americans still have questions on how the bill affects them as employees, small business owners and within their households.

Florida Hospital Memorial Medical Center will be hosting a town hall meeting to help answer questions raised by Volusia County residents. Guest panelists will be comprised of experts from the health care industry, insurance industry, small and large business owners as well as county and state representatives.

If you would be interested in learning more about how to participate in the town hall forum by hosting a vendor table please contact Danielle Zili at 386.231.5090 or by email at Danielle.Zili@FHMMC.org. Participating vendors will be provided with a 6 foot table to exhibit information about their services.



 **FLORIDA HOSPITAL
MEMORIAL MEDICAL CENTER**
A Christian mission of hope, health and healing.

301 Memorial Medical Parkway | 386.231.3000 | FloridaHospitalMemorial.org





Who says diabetics can't enjoy a delicious lifestyle?

Our Diabetes Nutrition Education Classes teach diabetics and their families about nutrition, vitamins, dining out and everything they need to know to stay healthy.

Participants may also attend our Diabetes Support Group which meets 9-10 am, before class. The group is facilitated by Diabetes Educator Joyce Parillo, RN, CDE.

For more information, call (386) 943-4727.



**FLORIDA HOSPITAL
FISH MEMORIAL**
www.FHFishMemorial.org

Nutrition Ed Facts

Serving Size everyone (Diabetics)

Third Thursday of the month

from 10 am -12:30 pm

Florida Hospital Fish Memorial

1061 Medical Center Drive

Summit Bldg., Suite 211

Orange City, Florida 32763

Certified Diabetes Educator

Glenna Raidt, RD, LD

Fee \$10

For more information or to register call (386) 917-5271.



SECOND ANNUAL
Wreath Contest

Our differences can reveal the infinite beauty of God.

The FHMMC Inclusivity Team wants you to show us what Sacred Work means in your department by decorating a wreath showcasing the cultures and traditions that your department represents.

Wreath pick up: November 14 – 18 from
Brandi Troxell – 8th Floor, Employee Health
All decorated wreaths must be returned by
December 5th to FHMMC or FHO for display.
For contest rules and details, please visit ARC.

 **FLORIDA HOSPITAL
MEMORIAL MEDICAL CENTER**
Main Campus | Oceanside

A Christian mission of hope, health and healing.



You Matter.

Our extensive experience with patients suffering from CHF assures that you can be confident that you'll have the most comprehensive and seamless plan of care for all of your needs at home.

Bottom line? We know you. You know us. And your well being is all that really matters.



"I have only been on the program for 3 months and I feel so much better! I am able to live and enjoy my life! I know this is working for me."

J.B., Age 63

Cardiac Program



If it matters to you,
it matters to us.



For more information, call
407-865-5489
800-446-2564
813-436-2900

matters to you, it matters to us.



With more than 5 million people with 'congestive heart failure' (CHF) and over 500,000 more diagnosed each year, CHF is certainly a life changing matter, but it's important to know you're not alone. While there are many people with this disease ... you should not feel like 'just another patient.'

This diagnosis matters. You matter. If it matters to you, it matters to us.



Why choose FHHI?

Congestive heart failure requires complex treatment and clinical expertise, and is why selecting the best home infusion provider is essential to your overall success and well being. The HeartMatters program is focused specifically on the multi-faceted needs of cardiac patients.

Features Include:

- In-hospital connection of your medication prior to discharge
- Education and training for you and your family
- Improved quality of life, allowing you to participate in the activities that matter most to you
- Customized formulation of your medication
- Home Infusion industry leader, since 1992

Our Pharmacists Matter.

With more than a century of combined home infusion experience, these doctors of pharmacy have extensive training and expertise in all aspects of home infusion therapy, specifically in the protocols associated with chronic congestive heart failure.

Our Expert Pharmacists:

- Understand CHF and know how to correlate your symptoms with the progression of your disease
- Have great rapport with physicians in the community
- Utilize a Pharmacy Team approach to your plan of care
- Are available 24 hours a day, 7 days a week, 365 days a year.

Services Include:

- Inotropic therapies: milrinone, dobutamine, dopamine
- Anti-infective therapies
- Nutritional Support
- Symptom and pain management
- Medication reconciliation and management

Our Nurses Matter.

If FHHI is your nursing agency, you'll benefit from highly qualified nurses working in close partnership and collaboration with your Pharmacy Team and physicians.

Our Expert Nurses:

- Understand the comprehensive nature of CHF.
- Perform comprehensive clinical assessments at each visit
- Proficient in the administration of these specialized medications
- Provide on-going education and training allowing you to be as independent as possible.

"My heart function has improved by 35% and greatly changed my lifestyle. I feel like all of the team go to great lengths to ensure that I have everything I need."

— L.M., Age 71



To view average ER wait times,
text **ER** to **23000** or visit
CentralFloridaRegional.com.

ER

417 North to Exit 50 then 3 miles north on 17-92

AIRPORT SIGNAGE

MEET THE ROBOT

You are invited to meet the newest member of our surgical team.

The da Vinci® Robot

Tuesday, September 24, 2013

Noon - 7 p.m.

Demonstration will be held in Home Suite Home located on the first floor of Central Florida Regional Hospital next door to Pre-Admission Testing.



da Vinci.Surgery

Central Florida
REGIONAL HOSPITAL

Lake Nona
OPHTHALMOLOGY

iCare

Lake Nona OPHTHALMOLOGY

iSpa



Located Upstairs

Comprehensive Medical and Surgical Eyecare & Boutique Medical Spa

WWW.NONAEYEMD.COM

407.857.EYES (3937)



CHIRAG PATEL, MD
KRISHMA PATEL, PA-C
ANGIE BEYER, AESTHETICIAN/CME

Lake Nona's Only Boutique Medical/Day Spa

Facials ■ Chemical Peels ■ Microdermabrasion ■ Wrinkle Reduction Systems/Facial Fillers



Receive a FREE MINI-FACIAL When You Schedule a Complimentary Consultation! (Over a \$60 Value)

Lake Nona
OPHTHALMOLOGY
iCare | iSpa

407-857-3937 | www.NonaEyeMD.com

Lake Nona OPHTHALMOLOGY

iSpa | A Boutique Medical Spa

Chirag J. Patel, M.D. ■ Krishna Patel, PA-C ■ Angie Beyer, Aesthetician/CME

Our Signature Menu

Consultation

Each patient will receive a complimentary initial consultation with Dr. Patel and his Aesthetic Team. The consultation includes a full medical history, personal evaluations by Dr. Patel and his Aesthetic Team, and a team based discussion of a treatment plan that focuses on each patient's individual needs.

Facials

A facial cleanses, exfoliates and nourishes the skin to promote clear, well-hydrated skin. All of our facials are uniquely customized to each patient's skin type. Our facials focus on your specific conditions and concerns - such as acne, anti-aging, deep pore cleansing, detoxification, dehydration and hyperpigmentation. We exfoliate, rejuvenate, and revitalize your skin using Obagi skincare products.

Basic Facial Our basic facial includes a personalized skin analysis, cleansing, exfoliation, mask, and application of serum and sun protection.

Signature Medical Grade Facial Our premier facial includes a comprehensive skin analysis, cleansing, steaming, enzymatic exfoliation, extractions, a light medical-grade chemical peel, and mask culminating with a massage of serums and sun protection (High Frequency if needed).

Microdermabrasion Medical level Microdermabrasion sloughs away degenerated surface level skin cells and leaves the skin soft and renewed, with more even pigmentation, increased tone and a youthful glow.

Seasonal Facial Just like nature, our skin changes with the rhythms of the seasons. In order to offer the skin all of the essential elements it needs to perform at its peak, we choose seasonal organic cocktails that blend natural active ingredients and memorable fragrances to create the perfect treatment to keep you in tune with nature. Ask our Aesthetic team about our seasonal specials.

Chemical Peels

As we age, our skin takes longer to renew itself. Skin becomes drier, thicker and duller. Exfoliation is essential in helping skin renew and be more receptive to other skincare products. Chemical peels are a method of exfoliation that helps to give a brighter and fresher appearance to the skin. Many patients find chemical peels useful in controlling acne, preventing outbreaks, facial blemishes, wrinkles, and uneven skin pigmentation.

Obagi Signature Peel Uncover your inner beauty and outer glow with the Obagi Blue Peel FACIANCE, a salicylic acid-based facial chemical peel for all skin types that exfoliates and helps improve overall complexion. Instant, radiant results for most skin types. It can improve a range of skin concerns, including photodamage, skin tone, and texture. This signature peel provides superficial exfoliation, with little to no downtime, providing tighter, smoother, and brighter-looking skin.

Neova Renaissance 2 Peel Rejuvenate your complexion with Neova's Renaissance 2 Peel. A medium-strength peel relying on a specific blend of exfoliating acids—Lactic Acid (AHA), Salicylic Acid (BHA) and Resorcinol—with a pH range of 2 to 3. Renaissance 2 Peel delivers noticeable improvement after one peel and dramatic results after a series of treatments. Diminish signs of wrinkles, lighten appearance of hyper-pigmentation, and control acne-prone skin with this formulation.

Wrinkle Reduction Systems and Facial Fillers

Pelleve The Pelleve System delivers constant, gradual radiofrequency energy deeply into the skin, causing heat to build up where the skin and fat layer meet. The increasing heat modifies the collagen bundles deep in the skin, causing contraction and stimulating the growth of new collagen over time. The result: firmer, tighter younger looking skin.

Full Face	Forehead
Eyes	Lower Face
Neck	Hands

BOTOX BOTOX Cosmetic is a simple, non-surgical procedure for temporarily reducing the appearance of moderate to severe wrinkle lines. BOTOX Cosmetic is a purified protein that reduces the activity of the wrinkle-causing muscle contractions that are overactive, ultimately creating an improved appearance. Results can last up to four months and may vary with each patient.

JUVÉDERM Young, healthy-looking skin contains an abundance of a naturally hydrating substance called hyaluronic acid (HA). But as you age, sunlight and other factors can reduce the amount of HA in your skin. The lack of HA causes your skin to lose structure and volume, creating unwanted facial wrinkles and folds—like those parentheses lines around your nose and mouth. The JUVÉDERM family of hyaluronic acid dermal fillers provides a smooth, long-lasting correction of moderate to severe facial wrinkles, folds, and volume loss.

Add On Services

Microdermabrasion A light microdermabrasion service can supplement any facial.

Light Chemical Peel A superficial, non-medical grade, chemical peel can add even more radiance to your basic facial. According to your skin type, our Aesthetician will choose from one of three exfoliating formulations.

Our Signature Packages

iSpa Skin Brightening Package Our skin brightening package offers two sessions of our signature medical facials and a full microdermabrasion session.

Ultimate Exfoliation Package Our total skin-renewal process will slough away your old, tough, and dull skin cells, leaving a soft, even-toned, healthier complexion. This package includes three full service microdermabrasion sessions with an additional session of our basic facial.

Obagi Signature Peel Package For best results, pamper yourself with a series of three Obagi Signature Peels. Uncover your radiant glow with this package and receive a complimentary Obagi DailySkin Eye Treatment Cream (over a \$100 dollar value).

Neova Rejuvenating Package Revamp your skin complexion and tone with a series of three Neova Renaissance 2 Peels. Our total skin rejuvenation package comes with a complimentary DNA Damage Control Sunscreen (over a \$50 dollar value).

Ultimate Wrinkle Reduction Package We believe in total facial rejuvenation using a long term global treatment strategy. Our signature Wrinkle Reduction Package includes a complete consultation, a complete premium skin care line, three sessions of Pelleve, and \$600 of additional credit toward more product or services to target remaining areas of concern.

Products

Ask our aesthetic team about our premium prescription skin care product lines such as Obagi and Neova. We carry complete systems, as well as targeted products, to address your skin concerns, such as acne, sunspots, and aging. Additionally, we carry Latisse for thicker, fuller, and longer eyelashes.

Lake Nona
OPHTHALMOLOGY

iSpa | A Boutique Medical Spa

Schedule Your iSpa
Appointment Now.

407.857.3937
www.NonaEyeMD.com

CONCUSSION AWARENESS IN ATHLETICS

A concussion is a form of traumatic brain injury, typically caused by a blow to the head that shakes the brain inside of the skull. Many concussions do not leave visible signs of injury (such as bruises or cuts), but that does not mean an internal brain injury did not occur.

Who Suffers from Concussions?

Concussions affect athletes of all sports, but it is more prevalent in contact sports such as football, lacrosse and hockey.



At least one player sustains a mild concussion in nearly every American football game.



Concussion rates more than doubled among students age 8-19 participating in sports like basketball, soccer and football between 1997 and 2007, even as participation in those sports declined.

15% Concussion Related Injuries

85% All Other Sports Related Injuries

A 2011 study of U.S. high schools with at least one athletic trainer on staff found that concussions accounted for nearly 15% of all sports-related injuries reported to ATs.



More than 248,000 children visited hospital emergency departments in 2009 for concussions and other traumatic brain injuries related to sports and recreation.

140,000 high school student-athletes suffer concussions annually nationwide.

Concussions can occur in any sport. Recognition and proper management of concussions when they first occur can help prevent further injury or even death.

FLORIDA CONCUSSION LAW

The Florida Youth Concussion Law was established in 2012 and requires that athletic trainers and/or coaches remove an athlete from a game or practice session immediately following a suspected head injury. Prior to returning to play, the athlete must be evaluated and receive medical clearance from a physician.

Signs Observed by Coaching Staff

- Appears dazed or stunned
- Is confused about assignment or position
- Forgets sports plays
- Is unsure of game, score, or opponent
- Moves clumsily
- Answers questions slowly
- Loses consciousness (even briefly)
- Shows behavior or personality changes
- Can't recall events prior to hit or fall
- Can't recall events after hit or fall

What To Do

- If you think an athlete has sustained a head injury:
- Recognize the injury and the dangers of continued play
 - Remove the athlete immediately from activity - practice or a game
 - Refer the athlete for medical attention as soon as possible
 - Notify the athlete's home and explain your obligation to them
 - Return the athlete to play only after they have provided necessary medical clearance

Symptoms Reported by Athlete

- Headache or "pressure" in head
- Nausea or vomiting
- Balance problems or dizziness
- Double or blurry vision
- Sensitivity to light
- Sensitivity to noise
- Feeling sluggish, hazy, foggy, or groggy
- Concentration or memory problems
- Confusion
- Does not "feel right"

What To Do

- If you think you or another athlete may have a concussion:
- Notify your coach, athletic trainer and/or your parent immediately
 - Remove yourself from the game and seek medical attention
 - Do not return to play until being evaluated and receiving clearance from an appropriate medical provider



Orlando Orthopaedic Center

Same Day, Next Day Appointments Available

www.OrlandoOrtho.com/Concussions |

We can evaluate and clear your athlete to return to play. Our Concussion Network Services include:

- Complete physician evaluation
- Computerized neurological evaluation
- Communication between physician, parent, athletic trainer and coach

Call 407.254.2500 to Schedule Your Baseline Test and/or Concussion Evaluation.

SAMPLE PAGES

EVALUATION CRITERIA

The following criteria will be used to evaluate developer submissions and how well they meet the "vision" for the use and improvement of the property.

Proven Ability of the Development Team

- Experience of the firm(s) and the individual(s) proposed to be assigned to the project in successfully developing, financing, designing, constructing, marketing, operating, and managing projects similar in size and scope to the project. Experience of the team in successfully managing and developing hotels is preferred. Demonstrated experience of the architect; appropriateness of this particular site, the development concept and its relationship to the area. The design expertise in downtown mixed-use projects in historic districts and receipt of design awards are of particular interest.
- Demonstrated capability of principals to secure the financing to develop (and operate, if applicable) the proposed major components of the proposal and project.
- Financial capability and expressed intention to complete the proposed redevelopment in a timely manner and within scheduled budgetary constraints.

Scope and Quality of the Development

- Distinctiveness and overall quality of project concept.
- Impacts and links to transportation systems including service and vehicular traffic, auto traffic, parking and pedestrian ways within downtown core.
- Physical and functional relationship to the RiverWalk of Historic Downtown Sanford.
- The extent to which the project enhances the streetscape and pedestrian experience on the RiverWalk.
- The overall quality of the landscape and hardscape design concepts; features to be emphasized and integrated.
- Strong preference for projects that include retail uses at the street level and the initial occupancy of the building.
- Use of environmentally-friendly practices and materials.

Scope and Quality of Project to Achieve Downtown Sanford

- How well the proposed urban renewal plan goals to achieve a varied experience for shopping, retail, cultural/entertainment, residential and work uses and makes the best possible use of existing and anticipated other public facilities, resources and investments.

This property is a key site and an anchor for new development along the Sanford RiverWalk.

The sites front Lake Monroe along Seminole Boulevard. The property sits adjacent to the Marina Harbour, the City's Civic Center and Historic Downtown. It is important that the planned use(s) and design of the property convey a dynamic and active atmosphere that enhances the existing historic character and urban fabric of the City's downtown and established heritage.

Desired Critical Physical Features:
Listed on the right are some suggestions.

DESIRED CITY GOALS FOR THE SITE

- Unified look for whole parcel; site may have more than one building.
- Acknowledge and compliment Lake Monroe. Buildings should be at least three stories in height. Current design guidelines restrict maximum height to six stories.
- Development provides places for people to go and be seen from adjacent streets.
- Exterior materials must be compatible with those found in the Historic Downtown. These include, but are not limited to, brick, glazed block, tile, stone, approved concrete masonry units and/or architectural precast concrete.
- Building(s) on-site should total at least 118,000 square feet. The buildings should be located on or very close to the street. Long facades should be avoided. Blank walls are to be avoided.
- Buildings shall be developed on a level.
- Windows on the ground floor should provide typical of many buildings in the area; side views to the interior.
- Windows on the upper floors should provide other exterior appearance of Downtown through the building.
- Building entrances should be prominent and oriented.
- Sidewalk width of at least 10 feet.
- Heating and ventilation systems should be efficient and/or an architect's design.
- Service and loading docks should be integrated in design.

City of Sanford, Florida is Pleased to Announce an Exciting Waterfront Redevelopment Opportunity!



REQUEST FOR QUALIFICATIONS FROM PRIVATE DEVELOPERS

Old Post Office Site
221 N. Palmetto Avenue
Sanford, Florida

Sanford RiverWalk and Marina

Downtown

Discover Sanford



SANFORD
FLORIDA
-1877-

www.sanfordfl.gov

Sanford

The Jewel on the St. Johns River



Sanford, one of Central Florida's oldest incorporated cities, is home to bricklined streets, towering oaks, elegant store-fronts and many beautiful, nineteenth-century Victorian homes. The picturesque downtown showcases unique shops, restaurants and art galleries. Events, such as the Saturday morning jazz concerts in Magnolia Square, theatrical productions at the renovated Wayne Densch Performing Arts Center, the annual Greater Sanford Regional Chamber of Commerce Bikefest, and the monthly Alive After 5 street parties attract visitors from all over.



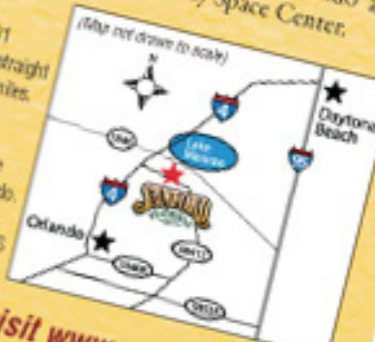
Sail on a boat, enjoy a sunset, explore history! Sanford sits on the South shore of Lake Monroe, which provides a waterfront backdrop for walking, biking, jogging or just enjoying the natural beauty. RiverWalk, with its gazebos and swinging benches, has 1.2 miles of pedestrian walking paths. Along the way, you can visit Veterans Memorial Park, Marina Island, the Sanford Museum and Ft. Mellon Park with its new kid park and Splash Pad. Stop for lunch at one of the lakeside or nearby downtown restaurants. Dance the night away, listen to live music, or just relax in some of the most unique night spots you can find. Come visit for the day, stay at one of our hotels or the Higgins House B & B. Easy access to I-4, 417, beaches, Orlando and Kennedy Space Center.



© AP Photos/Reichelt.com

From I-95 S (Jacksonville):
Exit 290B I-4 to Orlando. Take exit 101 (SR 46) turn left onto SR 46. Continue straight on SR 46 (turns into 1st St.) about 3.5 miles.

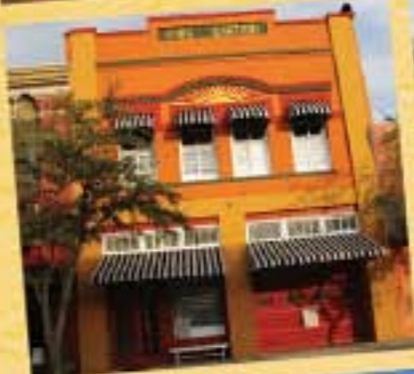
From I-75 S (Georgia):
Exit Temple south towards Orlando. Take exit 265, merge onto SR 408 east to Orlando. Exit 10B to I-4 east towards Daytona Beach. Take exit 101C Sanford. Travel east on SR 46 about 3.5 miles.



For more information visit www.sanfordfl.gov or call 407.302.2586

FREE SHUTTLE SERVICE

Discover Sanford



Visit Downtown Sanford while you wait for departure or before you drive to your final destination. Have some lunch, do some shopping and we'll have you back in plenty of time.

 **AMTRAK**
Enjoy the journey.™

SANFORD
FLORIDA
—1877—
www.sanfordfl.gov

UPTOWN AVALON

TRIBECA ■ CHELSEA ■ SOHO



Unique,
Upscale,
Urban,
Three-Story
Townhomes!



Tribeca

1992 sq. ft.

The Tribeca is our largest floor plan with three bedrooms, three baths and a den on the first floor. It has a balcony off the second floor and other layout options, such as a third floor laundry room.



1st Floor

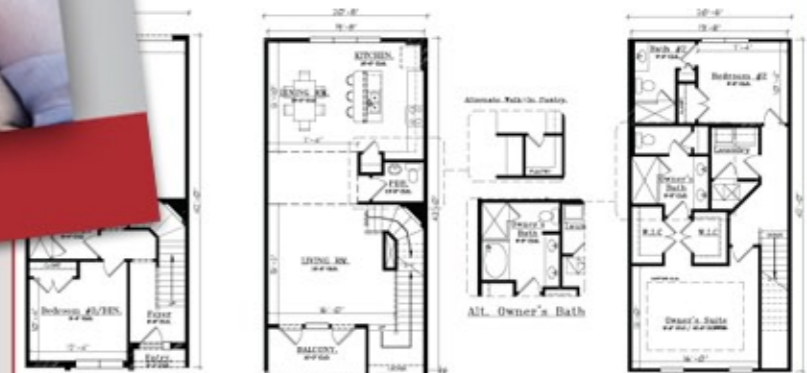
2nd Floor

3rd Floor

SoHo

1982 sq. ft.

The SoHo has three bedrooms and three and a half baths, with a large balcony on the second floor, an open floor plan and great site line throughout the kitchen. This model also has a bedroom on the first floor with a full bath.



1st Floor

2nd Floor

3rd Floor

Located in Beautiful Downtown Avalon Park

Take a relaxing stroll down a tree-lined street from your Tribeca townhome to Avalon Park's lakeside village or to one of the many parks. As an Uptown Avalon resident, you'll get to enjoy all of Avalon Park's amenities.



Whichever Uptown Avalon Townhome you choose, you'll be in the heart of Downtown Avalon Park, with schools, shopping, dining and other services close by. You may never need to, or want to, leave the neighborhood. If you do, you'll have easy access to Central Florida's highways, and a short drive to UCF, Orlando, beaches, the airport and theme parks.



There's fun for your kids at the playground or splash pad, and for your dog at the dog park - all within walking distance. Avalon Park also holds many events for the whole family, such as carnivals, holiday and food truck festivals.





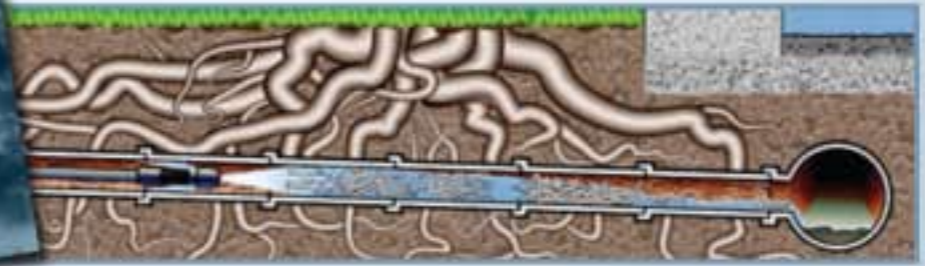
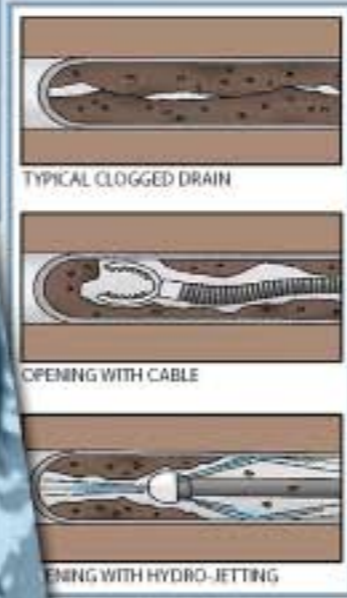
**It HAS to Work.
When It Doesn't,
CALL US.**

HERRELL PLUMBING
SINCE 1970

RESIDENTIAL
COMMERCIAL

407-273-6260

Drain Cleaning and Video Inspection



The Jetter

When your drains aren't draining, you need them cleaned fast – with no mess and as little interruption of your business as possible. If you ever had drains cleared with cable machines, you may have thought "there's got to be a better way." You were right. Herrell Plumbing uses the latest in drain cleaning technology. Our water jetting machine will remove clogs, debris and buildup on the walls of the pipe, sending it down the sewer line, away from your business.

The multitude of jetting heads, designed to remove everything from roots to concrete and almost anything in between, allows us to guarantee cleaning of your drain line without harming your pipes. Hydro-jetting should also be used in regular maintenance at businesses such as restaurants that have a high likelihood of greasy buildup in their drains.

Camera Inspection & Sewer Line Location

At 4000 psi and 18 gpm, not much stops our jetter. When something does, we send our camera down the pipe to inspect it. We provide you with a digital copy of the video that will show you any problems we find. If there is pipe breakage, root obstruction or other issue, we'll electronically locate it, then fix it. Instead of replacing the entire line, we repair only the section that failed, saving you money, aggravation and downtime.

Nutritional Guidance Inc.

*Celebrating 20 years of service
to the Orlando community*



Our mission

To provide individualized, comprehensive care and compassion to each client using the most current nutritional research.

We are Committed to *Full Recovery*

Weight Management

Creating habits that will contribute to appropriate body composition through energy balance will be the focus of weight management.

- Adult Obesity
- Childhood Obesity
- Compulsive Eating Behaviors
- Binge Eating Disorder
- Metabolic Syndrome
- Polycystic Ovarian Syndrome
- Weight Loss Surgery Assessments
- Night Eating Syndrome



General Nutrition

Research continues to reinforce the importance of sound nutrition to overall health and wellness. Guidance provided will be based on cutting edge, evidence-based research. At **Nutritional Guidance, Inc.** we serve individuals from infancy into their golden years, assisting them in maximizing their nutritional well-being.

- Prevention/Wellness Programs
- Family Nutrition
- Vegetarian Guidance
- Sports Nutrition/
Performance Enhancement
- Allergy Management
- Maternal Nutrition
- Toddler/Children Feeding Issues

Suite 18

In the Presidents Suites • The New Amway Center

jL Husted
L A P I D A R Y

WINDERMERE

Medical  Center

Primary Care | Urgent Care | Chiropractic Care

12 Things Women ~~Should~~ ^{Must} Know About Their Money

By Kat Almulla

A STEP BY STEP PLAYBOOK
FOR TAKING CHARGE



 Be Well



Healthiest
Company ●●●

Wellness Resource Guide



HD SUPPLY